

Moonshadow

Designed by Diane Nagel
Featuring the Shades of Grey collection by Nancy Gere
Size: 62 1/4" x 81"



Check www.windhamfabrics.com Free Project section to see if there are any pattern updates before you start your quilt project



812 Jersey Ave ~ Jersey City, NJ 07310 ~ 201.659.0444 ~ FAX: 201.659.9719
www.windhamfabrics.com email: retail@windhamfabrics.com

Moonshadow

Page 2

Finished Blocks: 12" x 9"

Materials:

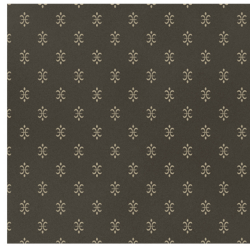
	Fabric	Color	Amount	Used for
Fabric A	41295-1	Dark brown	1 7/8 yards	Blocks
Fabric B	41293-1	Dark brown	1 1/4 yards	Blocks, binding
Fabric C	41293-2	Cream print	1 yard	Blocks
Fabric D	41296-2	Cream knit	3/8 yard	Blocks
Fabric E	41295-2	Cream	1 1/2 yards	Blocks, Inner border
Fabric F	41292-3	Tan floral	3/4 yard	Blocks
Fabric G	29003	Black	1/8 yard	Cornerstones
Fabric H	41294-2	Tan stripe	3/4 yard	Sashing
Fabric I	41294-1	Brown stripe	1/2 yard	Border 2
Fabric J	41291-2	Tan large floral	1 1/8 yards	Outer border



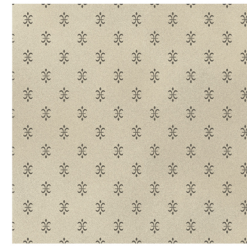
41291-2 Bone



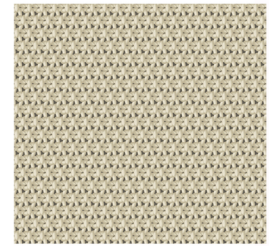
41292-3 Stone



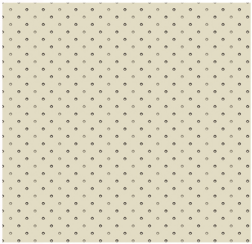
41293-1 Charcoal



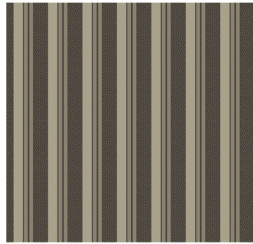
41293-2 Bone



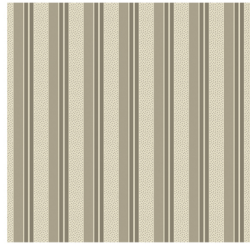
41296-2 Bone



41295-2 Bone



41294-1 Charcoal



41294-2 Bone



41295-1 Charcoal



29003 - Black

Cutting:

From Fabric A, cut:

- (6) 5" x 42" strips; cut into (28) Templates 1, and (24) Templates 3.
- (6) 5" x 42" strips; cut into (28) Templates 2 and (24) Templates 4.

From Fabric B, cut:

- (5) 4 1/2" x 42" strips; cut into (56) 3 1/2" x 4 1/2" rectangles.
- (8) 2 1/2" x 42" binding strips

From Fabric C, cut:

- (6) 5" x 42" strips; cut into (28) Templates 2 and (28) Templates 4.

From Fabric D, cut:

- (2) 4 1/2" x 42" strip; cut into (14) 3 1/2" x 4 1/2" rectangles.

From Fabric E, cut:

- (6) 5" x 42" strips; cut into (28) Templates 1, and (28) Templates 3.
- (2) 4 1/2" x 42" strip; cut into (14) 3 1/2" x 4 1/2" rectangles.
- (6) 1 1/4" x 42" strips. Piece the strips and cut (2) 1 1/4" x 71" strips and (2) 1 1/4" x 53 3/4" strips.



WINDHAM FABRICS

Moonshadow

Page 3

For Fabric F, cut:

- (5) 4 ½" x 42" strips; cut into (56) 3 ½" x 4 ½" rectangles.

For Fabric G, cut:

- (1) 1 ¾" x 42" strip; cut into (18) 1 ¾" squares.

For Fabric H, cut:

- (5) 1 ¾" x 42" strips; cut into (21) 1 ¾" x 9 ½" rectangles for vertical sashing.
- (8) 1 ¾" x 42" strips; cut into (24) 1 ¾" x 12 ½" rectangles for horizontal sashing.

For Fabric I, cut:

- (7) 1 ½" x 42" strips. Piece the strips and cut (2) 1 ½" x 72 ½" strips and (2) 55 ¾" strips.

For Fabric J, cut:

- (7) 4" x 42" strips. Piece the strips and cut (2) 4" x 74 ½" strips and (2) 4" x 62 ¾" strips.

Block Assembly

Block 1:

1. Position a Fabric A Template 1, right sides together with a Fabric C, Template 2. Pin both corners and the center of the curved seam. Sew with the larger template (2) down on the sewing machine, and stitch slowly as you ease in the fullness of the smaller piece (1) on top, making very sure that the seam allowance stays at ¼" throughout the seam. Press to Fabric A from the front side of the unit. See Diagram. Make 2. These should measure 3 ½" x 4 ½" unfinished. Set aside.

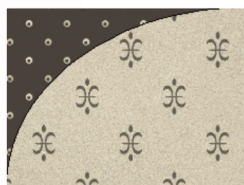


Diagram A.

← Curved pieced unit.
Make 2.
Press to dark corner.

Reversed Curved pieced unit →
Make 2.



2. To make the reversed version of the Curved pieced unit, repeat the instructions in Step 1 using Fabric A, Template 3, and Fabric C, Template 4. Make 2. See Diagram A above.
3. Sew the right short end of a Curved pieced unit to the left side of a Fabric D 3 ½" x 4 ½" rectangle.
4. Sew the Reversed unit to the right end of the rectangle to complete row 1 of the block. Make 2. See Diagram B.

Row 1 →
Diagram B.



5. Sew the short end of a Fabric B 3 ½" x 4 ½" rectangle to both sides of a Fabric D rectangle to make row 2 of the block.

Row 2 →



6. Rotate the second Row 1, and sew to the bottom of Row 2 to complete the block. Repeat steps 1-6 to make (14) blocks. Set aside.

Row 3 →



WINDHAM FABRICS

Moonshadow

Page 4

Block 2:

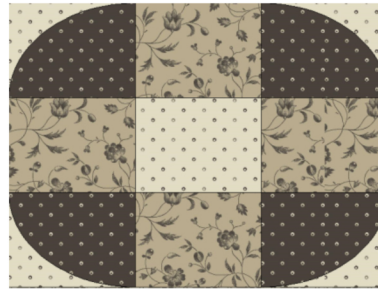
1. Repeat all the instructions Steps 1-6 from Block 1 with these exceptions:
 - a) Use Fabric E for Templates 1 and 3.
 - b) Use Fabric A for Templates 2 and 4.
 - c) Use Fabric F for the $3\frac{1}{2}'' \times 4\frac{1}{2}''$ rectangle in rows 1-3
 - d) Use Fabric E for the center rectangle in Row 2.
2. Make (14) blocks. See Diagram C. Set aside.

Diagram C.

Block 1.



Block 2.

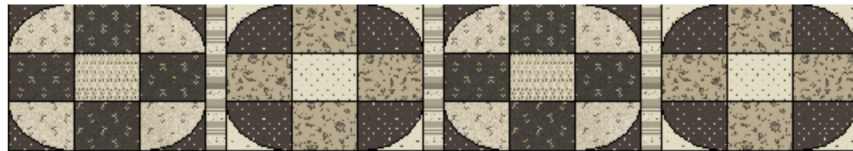


Quilt Assembly

The quilt center is made of 7 rows of 4 alternating blocks with sashing between the blocks vertically and horizontal rows of sashing with cornerstones.

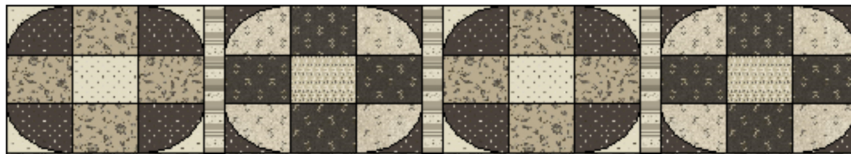
1. Sew alternately in a horizontal row, from left to right as follows: Block 1, Fabric H $1\frac{3}{4}'' \times 9\frac{1}{2}''$ vertical sashing strip, Block 2, sashing strip, Block 1, sashing strip, and Block 2. Repeat to make 4 rows.

Row 1 of quilt →



2. Sew alternately in a horizontal row, from left to right as follows: Block 2, Fabric H $1\frac{3}{4}'' \times 9\frac{1}{2}''$ vertical sashing strip, Block 1, sashing strip, Block 2, sashing strip, and Block 1. Repeat to make 3 rows.

Row 2 of quilt →



2. Sew end to end a Fabric H $1\frac{3}{4}'' \times 12\frac{1}{2}''$ sashing strip alternately with a Fabric G $1\frac{3}{4}''$ square, using (4) sashing strips and (3) black squares as shown. Repeat to make (6) horizontal sashing rows.

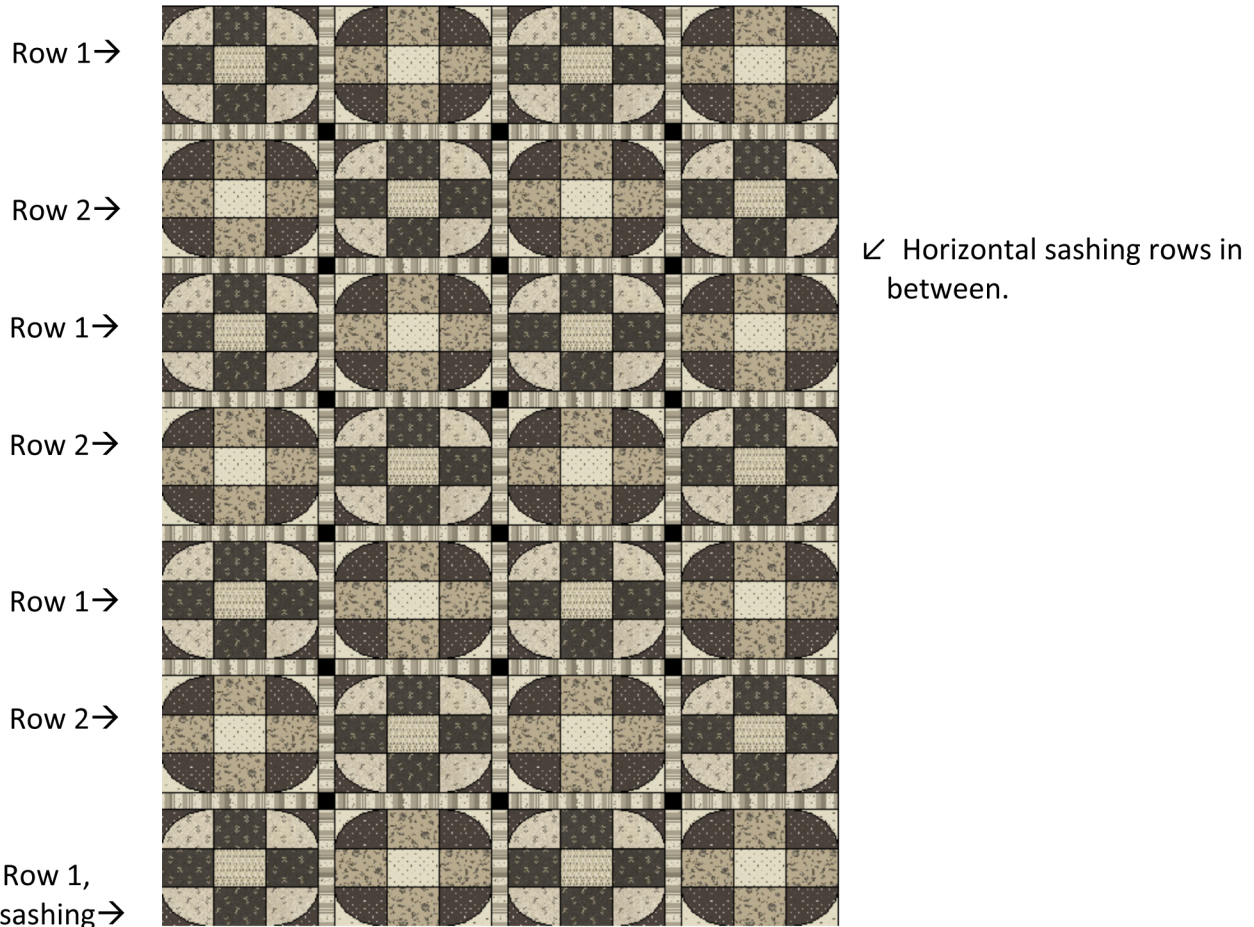
Horizontal Sashing rows ↓ Make 6.



Moonshadow

Page 5

3. Sew a Horizontal Sashing row to the bottom of (3) quilt Rows 1. Set aside the 4th Row 1.
4. Sew a Horizontal Sashing row to the bottom of all (3) quilt Rows 2.
5. The quilt center will be sewn from top to bottom in horizontal seams, alternating Rows 1 and 2 that have sashing strips attached. Continue until all the rows are sewn together, ending with a Row 2.
6. Sew the Row 2 without a sashing strip attached to the bottom of the quilt to complete the quilt center.



Borders:

1. Sew the Fabric E 1 ¼" x 71" strips to the sides of the quilt. Sew the Fabric E 1 ¼" x 53 ¾" strips to the top and bottom of the quilt.
2. Sew the Fabric I 1 ½" x 72 ½" strips to the sides of the quilt. Sew the Fabric I 1 ½" x 55 ¾" strips to the top and bottom of the quilt.
3. Sew the Fabric J 4" x 74 ½" strips to the sides of the quilt. Sew the Fabric J 4" x 62 ¾" strips to the top and bottom of the quilt.

Layer quilt, quilt as desired and bind using the Fabric B 2 ½" binding strips.

Be sure to visit www.windhamfabrics.com to see the complete collection and to download this and other Free Projects

**Templates for curved
seam unit.**

